



EUPHORIA

LOOK BOOK

FOR ART'S SAKE
LONDON

EUPHORIA

By For Art's Sake
London

Expertly handcrafted from the finest of materials, this season, step into the ethereal world of For Art's Sake.

Representing our forward approach to design and innovation within the eyewear industry, EUPHORIA is a collection that represents the refined and exciting world of FAS

EUPHORIA is an acronym for For Art's Sake. They are words that our customers use to describe us and words that we will continue to execute throughout each collection.

- E** - elegant eyewear
- U** - unique
- P** - playful and powerful
- H** - handmade
- O** - original designs
- R** - radiant
- I** - inspiring
- A** - affordable luxury

[click here to watch the
EUPHORIA campaign video](#)

FOR ART'S SAKE
LONDON



SUNGLASSES
e u p h o r i a



SUNGLASSES
e u p h o r i a

QD1 LINDY

LIMITED EDITION

STYLE: **LINDY** / 3 SKU / LIMITED EDITION



QD1 Lindy Black / Black gradient lens



QD2 Lindy Burgundy / Burgundy gradient lens



QD3 Lindy Topaz / Topaz gradient lens



QD2 LINDY



QD3 LINDY

FRAME:	QD1 / QD3 - 18-karat gold-plated stainless steel. QD2 - Rose-gold plated stainless steel
LENSES:	Ultra-Lightweight Nylon Lenses/Anti-reflective coating. 100% UVA & UVB protection/Gradient lenses
NOSE PADS:	Hypoallergenic & make-up resistant, white jadestone nose pads. Adjustable to fit all face shapes.
DETAILING:	Intricate shell and faux-pearl detailing to the edge of the frames.
MEASUREMENTS:	60mm -18mm -150mm

MUST HAVE



QS1 SHADYSIDE



QS2 SHADYSIDE



QS3 SHADYSIDE



QS4 SHADYSIDE

STYLE: **SHADYSIDE** / 4 SKU / MUST HAVE



QS1 Shadyside Black / Black tinted lens



QS2 Shadyside Champagne / Brown gradient lens



QS3 Shadyside White / Black gradient lens



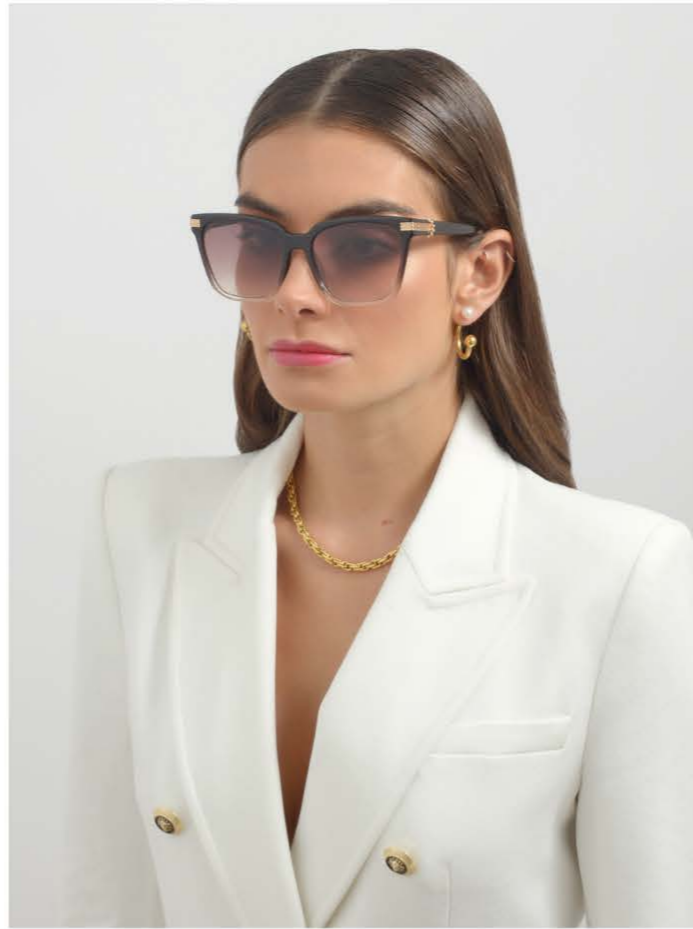
QS4 Shadyside Blue / Blue tinted lens

FRAME:	QS1 - Black glossy plant-based acetate frame. QS2 - Green tortoiseshell plant-based acetate frame. QS3 - White glossy plant-based acetate frame. QS4 - Matte black plant-based acetate frame.
LENSES:	Ultra-Lightweight Nylon Lenses/Anti-reflective coating. 100% UVA & UVB protection
DETAILING:	Grooved temple detailing with ornate stud edge. QS1/QS2/QS3 - 18-karat gold plated temple detailing. QS4 - Palladium temple detailing.
MEASUREMENTS:	59mm -19mm -149mm

MUST HAVE



QX1 GAIA



QX2 GAIA



QX3 GAIA



QX4 GAIA

STYLE: **GAIA** / 4 SKU / MUST HAVE



QX1 Gaia Black / Black tinted lens



QX2 Gaia Champagne / Brown gradient lens



QX3 Gaia Green / Green tinted lens



QX4 Gaia Red / Grey gradient lens

FRAME:	QX1 - Black glossy plant-based acetate frame. QX2 - Gradient brown plant-based acetate frame. QX3 - Brown tortoiseshell plant-based acetate frame. QX4 - Oxblood red glossy plant-based acetate frame.
LENSES:	Ultra-Lightweight Nylon Lenses/Anti-reflective coating. 100% UVA & UVB protection
DETAILING:	18-karat gold ornate temple detail.
MEASUREMENTS:	57mm -18mm -mm -149m

QX1 GAIA



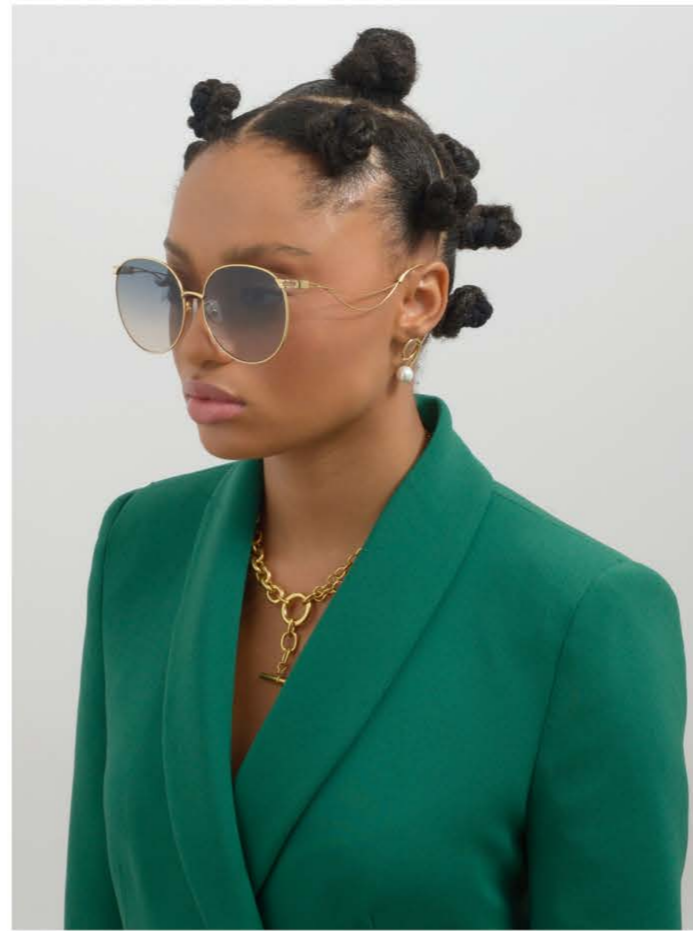
QY2 BIRTHDAY CAKE



CONCEPTUAL



QY1 BIRTHDAY CAKE



QY2 BIRTHDAY CAKE



QY3 BIRTHDAY CAKE



QY4 BIRTHDAY CAKE

STYLE: **BIRTHDAY CAKE** / 4 SKU / CONCEPTUAL



QY1 Birthday Cake Black / Black tinted lens



QY2 Birthday Cake Topaz / Topaz gradient lens



QY3 Birthday Cake Grey / Grey tinted lens



QY4 Birthday Cake Blue / Blue gradient lens

FRAME:	QY1/QY2 - 18-karat gold plated stainless steel. QY3/QY4 - Palladium plated stainless steel.
LENSES:	Ultra-Lightweight Nylon lenses/Anti-reflective coating. 100% UVA & UVB protection
NOSE PADS:	Hypoallergenic & make-up resistant, white jadestone nose pads. Adjustable to fit all face shapes.
DETAILING:	Unique twisted arm design with faux pearl tip designed to fit comfortably around the ear.
MEASUREMENTS:	61mm -16mm -130mm

LEFT: QS4 SHADYSIDE
RIGHT: QZ3 MOXIE TOPAZ



FROM LEFT TO RIGHT: QS4 SHADYSIDE,
QS3 SHADYSIDE, QZ3 MOXIE

QG1 MILKSHAKE

CONCEPTUAL



STYLE: **MILKSHAKE** / 4 SKU / CONCEPTUAL



QG1 Milkshake Black / Black tinted lens



QG2 Milkshake Champagne / Brown gradient lens



QG3 Milkshake Grey / Grey tinted lens



QG4 Milkshake Pink / Pink gradient lens



QG2 MILKSHAKE



QG3 MILKSHAKE

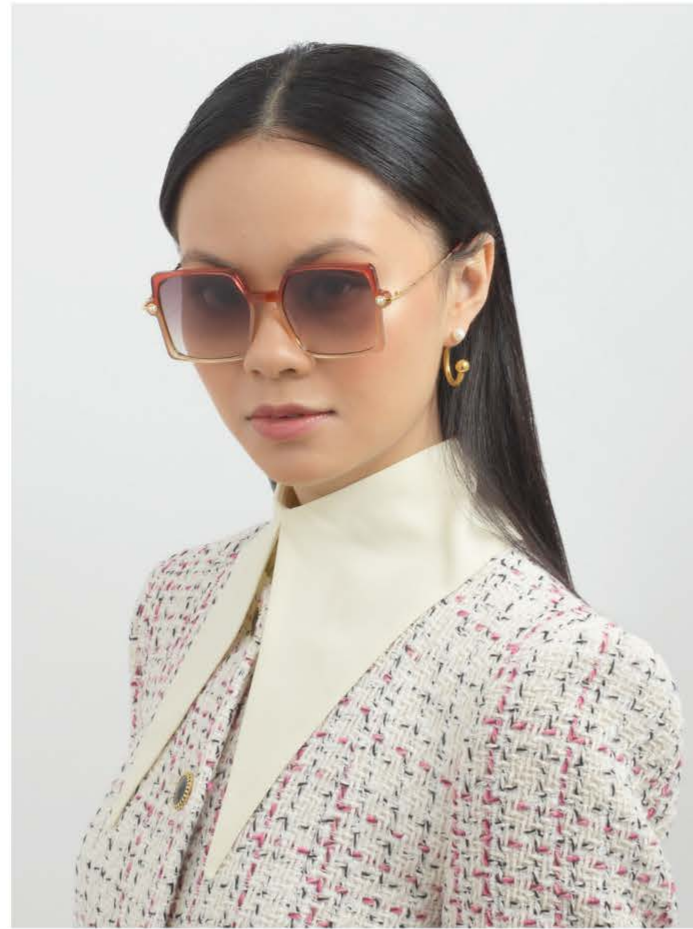


QG4 MILKSHAKE

FRAME:	QG1/QG2/QG3 - 18-karat gold plated stainless steel. QG4 - Rose-gold plated stainless steel
LENSES:	Ultra-Lightweight Nylon lenses/Anti-reflective coating. 100% UVA & UVB protection
NOSE PADS:	Hypoallergenic & make-up resistant, white jadestone nose pads. Adjustable to fit all face shapes.
DETAILING:	Distinctive cut-out lens detail.
MEASUREMENTS:	60mm -16mm -147mm



QZ1 MOXIE



QZ2 MOXIE



QZ3 MOXIE



QZ4 MOXIE

STYLE: **MOXIE** / 4 SKU / MUST HAVE



QZ1 Moxie Black / Black tinted lens



QZ2 Moxie Champagne / Brown gradient lens



QZ3 Moxie Topaz / Topaz gradient lens



QZ4 Moxie Green / Green tinted lens

FRAME:	QZ1 - Black glossy plant-based acetate frame. QZ2 - Gradient burgundy plant-based acetate frame. QZ3 - Gradient blue plant-based acetate frame. QZ4 - Brown glossy plant-based acetate frame. 18-karat gold plated arms.
LENSES:	Ultra-Lightweight Nylon Lenses/Anti-reflective coating. 100% UVA & UVB protection
DETAILING:	Organic twisted arms plated in 18-karat gold. Faux pearl temple detail.
MEASUREMENTS:	54mm -18mm -145mm

MUST HAVE



QA1 FAHRENHEIT



QA2 FAHRENHEIT



QA3 FAHRENHEIT



QA4 FAHRENHEIT

STYLE: **FAHRENHEIT** / 4 SKU / MUST HAVE



QA1 Fahrenheit Black / Black tinted lens



QA2 Fahrenheit Grey / Grey tinted lens



QA3 Fahrenheit Green / Green tinted lens



QA4 Fahrenheit Pink / Pink gradient lens

FRAME:	QA1 - Black glossy plant-based acetate frame. QA2 - Translucent grey plant-based acetate frame. QA3 - Translucent green plant-based acetate frame. QA4 - Translucent pink plant-based acetate frame. 18-karat gold-plated arms
LENSES:	Overset lens design. Ultra-Lightweight Nylon Lenses/Anti-reflective coating. 100% UVA & UVB protection
DETAILING:	Organic Grecian-style twisted arms in 18-karat gold plating.
MEASUREMENTS:	61mm -16mm -145mm

QW3 LAST SUMMER

LIMITED EDITION

QW3 LAST SUMMER
FRAME WITHOUT DETACHABLE
LENS OVERLAY



LIMITED EDITION



QW2 LAST SUMMER



QW1 LAST SUMMER



QW4 LAST SUMMER



STYLE: **LAST SUMMER** / 4 SKU / LIMITED EDITION



QW1 Last Summer Blue / Gradient Blue



Detachable frame. Light blue tinted lens



QW2 Last Summer Champagne / Gradient Brown.
Detachable frame. Light champagne tinted lens.



QW3 Last Summer Topaz / Gradient Topaz.
Detachable frame. Light topaz tinted lens.



QW4 Last Summer Purple / Gradient Purple.
Detachable frame. Light rose-pink tinted lens.

FRAME:	QW1 - Palladium plated. QW2/QW3 - 18-karat gold plated. QW4 - Rose-gold plated.
LENSES:	Detachable aviator lens with round frame overlay. Ultra-Lightweight Nylon Lenses/Anti-reflective coating. 100% UVA & UVB protection
NOSE PADS:	Hypoallergenic & make-up resistant, white jadestone nose pads. Adjustable to fit all face shapes.
DETAILING:	Detachable lens overlay.
MEASUREMENTS:	57mm -16mm -147mm



QR2 ICE CREAM

QF4 VOYAGER

QX4 GAIA

QR1 ICE CREAM



QR2 ICE CREAM

MUST HAVE



STYLE: **ICE CREAM** / 4 SKU / MUST HAVE



QR1 Ice Cream Black / Black tinted lens



QR2 Ice Cream Amber / Translucent yellow tinted lens



QR3 Ice Cream Green / Green tinted lens



QR4 Fahrenheit Grey / Grey tinted lens



QR1 ICE CREAM



QR4 ICE CREAM



QR3 ICE CREAM

FRAME:	QR1 - Black glossy plant-based acetate frame. QR2 - Glossy black plant-based acetate frame. QR3 - Green tortoiseshell plant-based acetate frame. QR4 - Matte grey plant-based acetate frame.
LENSES:	Ultra-Lightweight Nylon Lenses/Anti-reflective coating. 100% UVA & UVB protection.
DETAILING:	18-karat gold plated temple knot detail.
MEASUREMENTS:	51mm -19mm -149mm

QL1 KNIGHT

LIMITED EDITION

STYLE: **KNIGHT** / 3 SKU / LIMITED EDITION



QL1 Knight Black / Black tinted lens



QL2 Knight Champagne /Brown gradient lens



QL3 Knight Green / Green tinted lens



QL3 KNIGHT



QL2 KNIGHT

FRAME:	QL1 - Palladium-plated stainless steel. QL2/QL3 - 18-karat gold plated stainless steel
LENSES:	Ultra-Lightweight Nylon Lenses/Anti-reflective coating. 100% UVA & UVB protection/Gradient lenses
NOSE PADS:	Hypoallergenic & make-up resistant, white jadestone nose pads. Adjustable to fit all face shapes.
DETAILING:	Unique twist detailing across the top of the frames.
MEASUREMENTS:	53mm -20mm -145mm



QR2 ICE CREAM

QF4 VOYAGER

QX4 GAIA



QF3 VOYAGER

MUST HAVE



QF1 VOYAGER



QF2 VOYAGER



QF3 VOYAGER



QF4 VOYAGER

STYLE: **VOYAGER** / 4 SKU / MUST HAVE



QF1 Voyager Black / Black tinted lens



QF2 Voyager Champagne / Brown gradient lens



QF3 Voyager Green / Green tinted lens



QF4 Voyager White / Black tinted lens

FRAME:	QF1 - Black glossy plant-based acetate frame. QF2 - Brown tortoiseshell plant-based acetate frame. QF3 - Transparent green plant-based acetate frame. QF4 - White glossy plant-based acetate frame. 18-karat gold-plated arms.
LENSES:	Ultra-Lightweight Nylon Lenses/Anti-reflective coating. 100% UVA & UVB protection
DETAILING:	Organic Grecian-style twisted arms with intricate open-work detailing in 18-karat gold plating.
MEASUREMENTS:	61mm -15mm -145mm

QH1 AFTERGLOW

LIMITED EDITION

STYLE: **AFTERGLOW** / 3 SKU / LIMITED EDITION



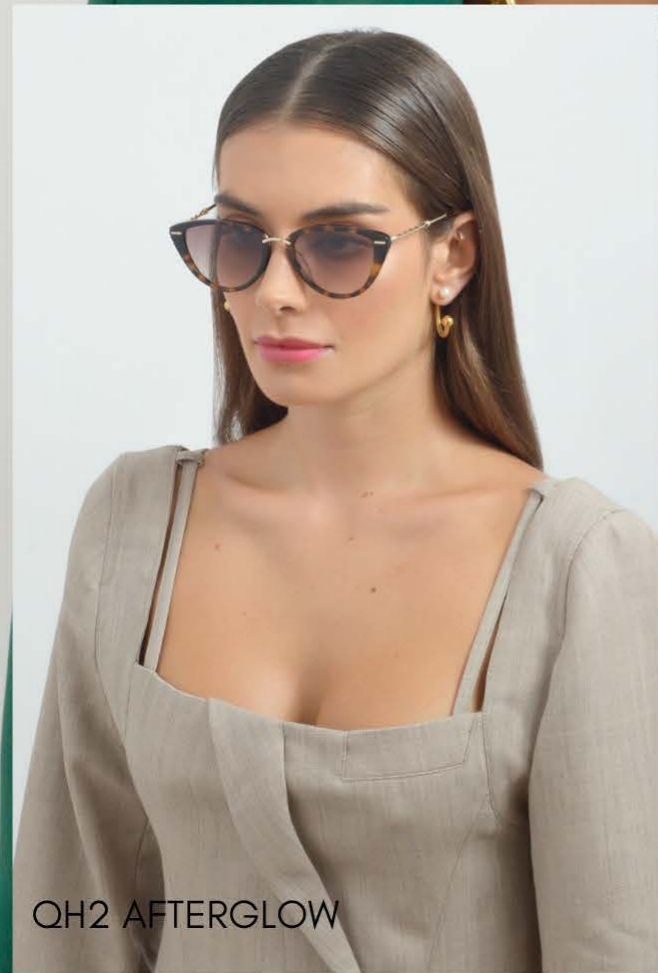
QH1 Afterglow Black / Black gradient lens



QH2 Afterglow Brown / Brown gradient lens



QH3 Afterglow Caramel / Black tinted lens

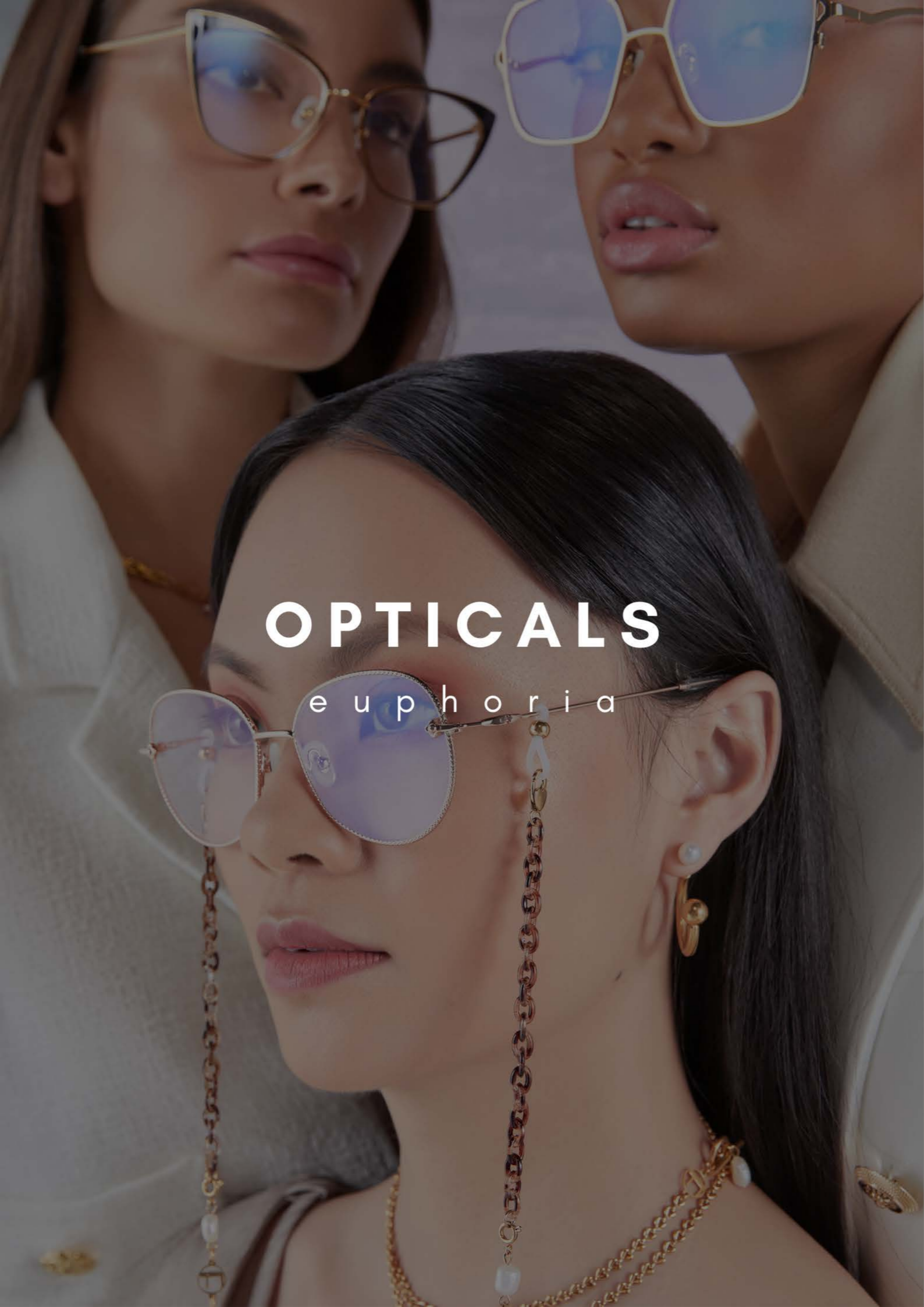


QH2 AFTERGLOW



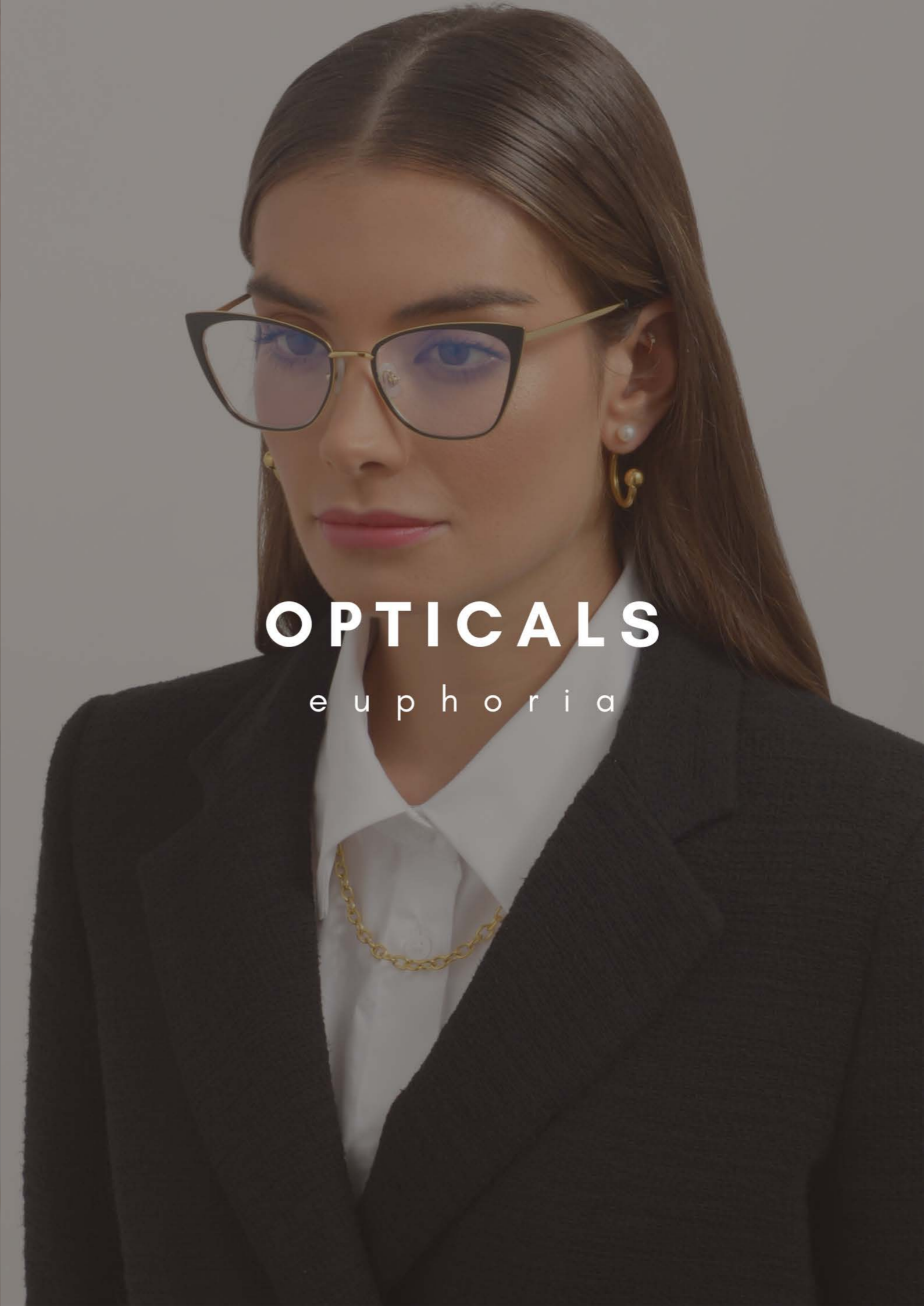
QH3 AFTERGLOW

FRAME:	QH1 - Black glossy plant-based acetate frame. QH2 - Brown tortoiseshell plant-based acetate frame. QH3 - Transparent pink plant-based acetate frame. 18-karat gold-plated arms.
LENSES:	Ultra-Lightweight Nylon Lenses/Anti-reflective coating. 100% UVA & UVB protection
DETAILING:	Organic Grecian-style twisted arms in 18-karat gold plating.
MEASUREMENTS:	55mm -20mm -145mm



OPTICALS

e u p h o r i a



OPTICALS

e u p h o r i a

OP542 MIMI

CONTEMPORARY

STYLE: **MIMI** / 3 SKU / CONTEMPORARY



OP541 Mimi Gold



OP542 Mimi Silver



OP543 Mimi Rose Gold



OP543 MIMI



OP541 MIMI TWO

FRAME:	OP541 - 18-karat gold plated stainless steel. OP542 - Palladium-plated stainless steel. OP543 - Rose-gold plated stainless steel. Electro-plating.
LENSES:	Ultra-Lightweight Nylon lenses/Anti-reflective coating. Blue-light filtered lenses, 100% UVA & UVB protection.
NOSE PADS:	Hypoallergenic & make-up resistant, white jadestone nose pads. Adjustable to fit all face shapes.
DETAILING:	Organic shaped frame.
MEASUREMENTS:	55mm -17mm -149mm

OP553 JASMINE

CONTEMPORARY

STYLE: **JASMINE** / 3 SKU / CONTEMPORARY



OP551 Jasmine Gold



OP552 Jasmine Silver



OP553 Jasmine Rose Gold



OP551 JASMINE



OP552 MIMI

FRAME:	OP551 - 18-karat gold plated stainless steel. OP552 - Palladium-plated stainless steel. OP553 - Rose-gold plated stainless steel. Electro-plating.
LENSES:	Ultra-Lightweight Nylon lenses/Anti-reflective coating. Blue-light filtered lenses, 100% UVA & UVB protection.
NOSE PADS:	Hypoallergenic & make-up resistant, white jadestone nose pads. Adjustable to fit all face shapes.
DETAILING:	Diamond-cut effect rim.
MEASUREMENTS:	55mm -17mm -149mm

OP563 BELOW ZERO

CONTEMPORARY

STYLE: **BELOW ZERO** / 3 SKU / CONTEMPORARY



OP561 Below Zero Black



OP562 Below Zero Grey



OP563 Below Zero Green



OP561 BELOW ZERO



OP562 BELOW ZERO

FRAME:	OP561 - Black plant-based acetate. OP562 - Translucent grey plant-based acetate. OP563 - Translucent green plant-based acetate.
LENSES:	Ultra-Lightweight Nylon lenses/Anti-reflective coating. Blue-light filtered lenses, 100% UVA & UVB protection.
DETAILING:	Palladium pated graphic inserts to the edge of the frame.
MEASUREMENTS:	

OP511 STELLA TWO

BEST-SELLER REINVENTED

STYLE: **STELLA TWO** / 3 SKU / BEST-SELLER REINVENTED



OP511 Stella Two Black



OP512 Stella Two Tan

OP513 Stella Two Mocha



OP513 STELLA TWO



OP512 STELLA TWO

FRAME:	14-karat gold plated stainless steel. Hand-painted enamel. Electro-plating.
LENSES:	Ultra-Lightweight Nylon lenses/Anti-reflective coating. Blue-light filtered lenses, 100% UVA & UVB protection.
NOSE PADS:	Hypoallergenic & make-up resistant, white jadestone nose pads. Adjustable to fit all face shapes.
DETAILING:	Subtle 14-karat frame-rim detailing for long-lasting wear. 3D nose bridge.
MEASUREMENTS:	55mm -17mm -145mm

OP244 COCONUT

NEW COLOURWAYS

STYLE: **COCONUT** / 1 SKU / NEW COLOURWAYS



OP244 Coconut Pink

FRAME:	18-karat gold plated stainless steel.
LENSES:	Ultra-Lightweight Nylon lenses/Anti-reflective coating. Blue-light filtered lenses, 100% UVA & UVB protection. Electro-plating.
NOSE PADS:	Hypoallergenic & make-up resistant, white jadestone nose pads. Adjustable to fit all face shapes.
DETAILING:	Transparent pink acetate lens trim.
MEASUREMENTS:	55mm -17mm -145mm

OP434 DION

NEW COLOURWAYS

STYLE: **DION** / 1 SKU / NEW COLOURWAYS



OP434 Dion Green

FRAME:	18-karat gold plated stainless steel.
LENSES:	Ultra-Lightweight Nylon lenses/Anti-reflective coating. Blue-light filtered lenses, 100% UVA & UVB protection. Electro-plating.
NOSE PADS:	Hypoallergenic & make-up resistant, white jadestone nose pads. Adjustable to fit all face shapes.
DETAILING:	Transparent pink acetate lens trim.
MEASUREMENTS:	55mm -17mm -145mm



EYEWEAR CHAINS

e u p h o r i a



EYEWEAR CHAINS

e u p h o r i a



CH-062 LISBON - detachable set to be worn as a necklace.

STYLE: **LISBON** / 2 SKU / MULTI-STYLING



CH-061 Lisbon Gold



CH-062 Lisbon Silver



CH-061 LISBON - detachable set to be worn as a necklace.



CHAIN:	CH-061 - 18-karat gold plated stainless steel. CH-062 - Palladium-plated stainless steel.
DETAILS:	Polished flat curb chain. Signature FAS logo charm. Lobster claw fastenings with optional silicon loops to attach to your eyewear.
FEATURES:	T-bar fastenings, designed to be detached from your eyewear and worn as a necklace. The perfect transitional and layering accessory.
MEASUREMENTS:	780mm



CH-051 VIENNA - detachable set to be worn as a necklace.

STYLE: **VIENNA** / 2 SKU / MULTI-STYLING



CH-051 Vienna Gold



CH-052 Vienna Silver



CH-052 VIENNA - detachable set to be worn as a necklace.

CHAIN:	CH-051 - 18-karat gold plated stainless steel. CH-052 - Palladium-plated stainless steel.
DETAILS:	Unique multi-link chain accented by a delicate draped chain. Signature FAS logo charm. Lobster claw fastenings with optional silicon loops to attach to your eyewear.
FEATURES:	T-bar fastenings, designed to be detached from your eyewear and worn as a necklace. The perfect transitional and layering accessory.
MEASUREMENTS:	780mm



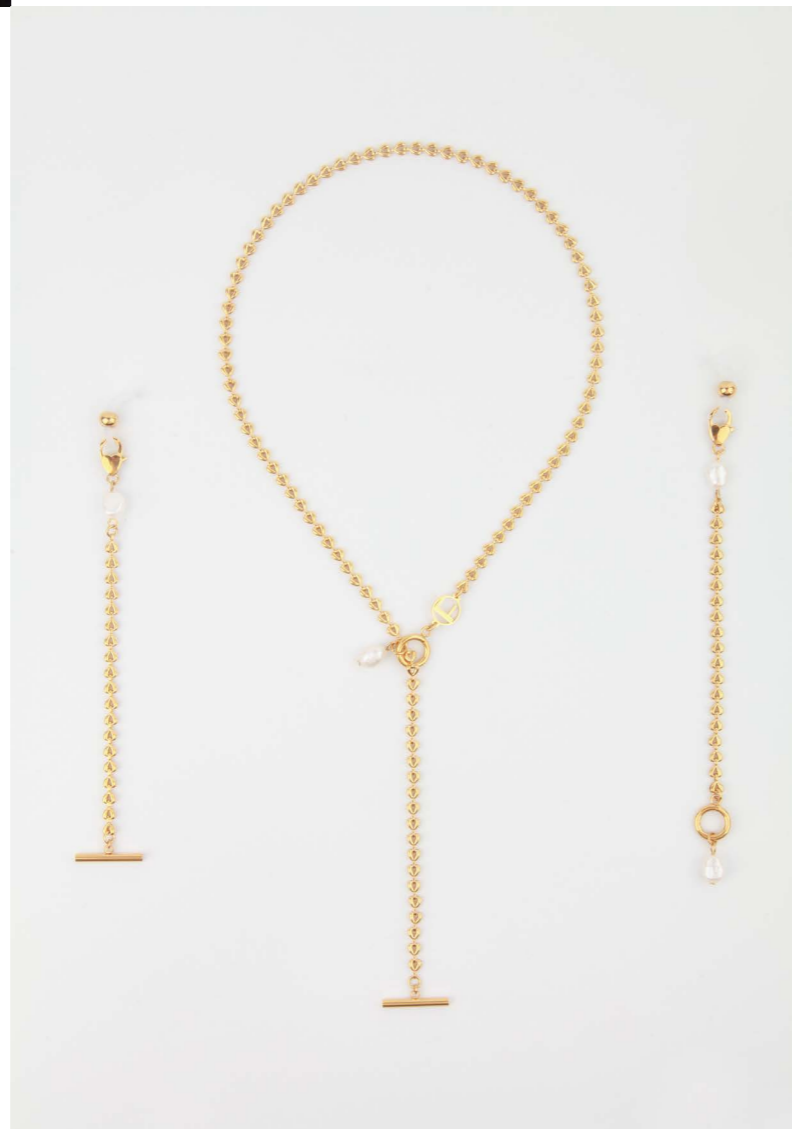
HAVANA CH-041

STYLE: **HAVANA** / 1 SKU / MULTI-STYLING



CH-041 Havana Gold

- 18-karat gold-plated stainless steel.
- Detachable set to be worn as a necklace.
- Distinctive and luxurious, polished heart-shaped chain with a signature FAS logo charm.
- Four freshwater pearl drops.
- Lobster claw fastenings with optional silicon loops to attach to your eyewear & a T-bar fastening when worn as a necklace.



CHAIN:	CH-041 - 18-karat gold plated stainless steel.
DETAILS:	Distinctive and luxurious, polished heart-shaped chain. Signature FAS logo charm. Four freshwater pearl drops. Lobster claw fastenings with optional silicon loops to attach to your eyewear.
FEATURES:	T-bar fastenings, designed to be detached from your eyewear and worn as a necklace. The perfect transitional and layering accessory.
MEASUREMENTS:	780mm

STYLE: **TOKYO** / 2 SKU / MULTI-STYLING



CH-031 TOKYO - detachable set to be worn as a necklace.



CH-031 Tokyo Black



CH-032 Tokyo Brown



CH-032 TOKYO - detachable set to be worn as a necklace.

CHAIN:	CH-031 - 18-karat gold plated stainless steel. Glossy black plant-based acetate links. CH-032 - 18-karat gold plated stainless steel. Brown tortoiseshell acetate links.
DETAILS:	Polished gold-plated chain with decorative link details. Contrasting acetate chain link ends. Signature FAS logo charm. Two freshwater pearl charms. Spring-ring and lobster claw fastenings with optional silicon loops to attach to your eyewear.
FEATURES:	Spring-ring fastening, designed to be detached from your eyewear and worn as a necklace. The perfect transitional and layering accessory.
MEASUREMENTS:	780mm



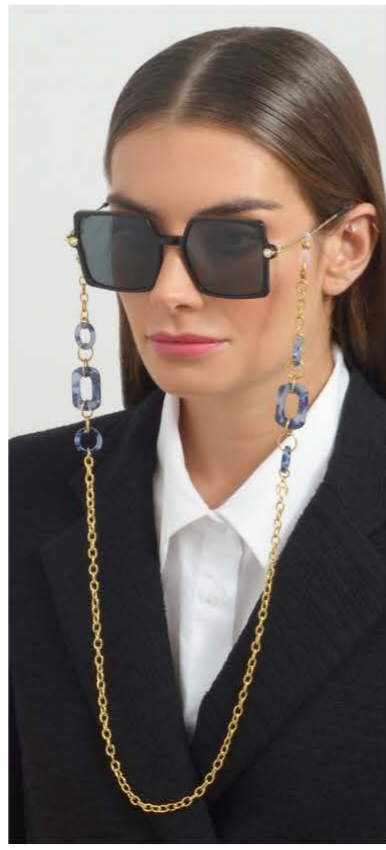
CH-021 NYC



CH-022 NYC



CH-023 NYC



STYLE: **NYC** / 3 SKU / ESSENTIAL



CH-021 NYC Black



CH-022 NYC Blue



CH-023 NYC Brown

CHAIN:	CH-021 - 18-karat gold plated stainless steel. Glossy black plant-based acetate links. CH-022 - 18-karat gold plated stainless steel. Blue tortoiseshell plant-based acetate links. CH-023 - 18-karat gold plated stainless steel. Brown tortoiseshell plant-based acetate links.
DETAILS:	Polished gold-plated chain. Oversized contrasting glossy acetate link detailing. Signature FAS logo charm. Lobster claw fastenings with optional silicon loops to attach to your eyewear.
FEATURES:	Oversized acetate links designed to elevate your look.
MEASUREMENTS:	780mm



CH-011 MILAN

STYLE: **MILAN** / 2 SKU / ESSENTIAL



CH-011 Milan Gold



CH-012 Milan Silver



CH-012 MILAN

CHAIN:	CH-011 - 18-karat gold plated stainless steel. CH-012 - Palladium-plated stainless steel.
DETAILS:	Ornate rope-effect chain with a hand-polished finish. Contrasting oval and round-link detailing. Signature FAS logo charm. Lobster claw fastenings with optional silicon loops to attach to your eyewear.
FEATURES:	Contrast link detailing designed to elevate your look.
MEASUREMENTS:	780mm

STYLE: **MIAMI** / 2 SKU / ESSENTIAL



CH-071 MIAMI



CH-071 Miami Gold



CH-072 Miami Silver



CH-072 MIAMI

CHAIN:	CH-071 - 18-karat gold plated stainless steel. CH-072 - Palladium-plated stainless steel.
DETAILS:	Delicate twist chain with a hand-polished finish. Signature FAS logo charm. Lobster claw fastenings with optional silicone loops to attach to your eyewear.
FEATURES:	Contrast link detailing designed to add a dash of decadence your look.
MEASUREMENTS:	780mm

CONTACT US

e u p h o r i a

FOR ART'S SAKE
LONDON

3 offices & distribution centres across the globe, and growing
STRONG

Wholesale Office London (UK) & The Netherlands:

+44 (0)20 3004 9679

Wholesale Customer Service WhatsApp (International):

+44 7465230018

Wholesale Customer Service WhatsApp (Europe):

+31 6 3886 3497

Email: sales@fasforartssake.com

Wholesale Customer Service WeChat ID:

forartssakechina



Request to access our wholesale platform:

www.fasorder.com

PR:

pr@fasforartssake.com

Follow us

IG: [@forartssake](https://www.instagram.com/forartssake)

Pinterest: [forartssake_official](https://www.pinterest.com/forartssake_official)

EUPHORIA

FOR ART'S SAKE
LONDON